

PMC CANADA LTD.

**PMC HTSD Fire Access Door for Fire Resistant Grease Duct
Design Number UL/CUL MH62508 UL1978/ULCS662**

Installation Procedure – Flat Access Doors Larger than 12 X 8

*** Inspect access door for any damage prior to installation, do not install any access door showing signs of damage nor without proper UL/cUL listing on any grease duct. ***

Step:#1

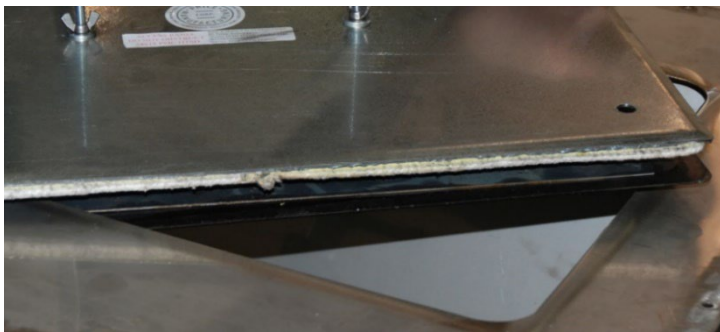
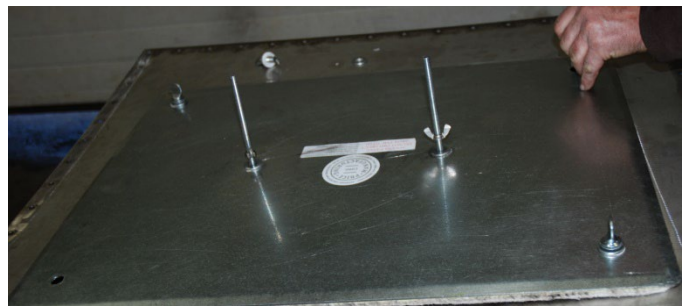


Remove the protective backing from the template supplied with the respective sized access door and center on the duct, in the appropriate place; provide a minimum 2” from any edge of the duct. When the grease duct passes through a partition or wall, maintain combustible clearance as per Grease Duct Manufacturer requirement.

Cut cleanly around the Template and remove both template and attached duct wall. Insure that the edge of this penetration is clean and free from burrs and slag.

Step #2

Remove the four thumb screws, loosen both wing nuts to separate door halves enough to slip access door into duct opening being careful not to damage gasketing.



Step #3

Pull access door outward insuring the centering stops of door interior are securely fitted into duct opening, centering door. Tighten wingnuts by hand one at a time until door is stable in centered position, then torque to 30 inch pounds.

Warning :

Improper installation may permit door to leak. Visually ensure that the gasket completely seals between the duct and the door.

IMPORTANT: Grease ducting must be internally inspected every 30 days for cleanliness and or cleaning. Prior to reinstallation after removal, if door shows any sign of damage, **DO NOT REINSTALL** - replace with **NEW ACCESS DOOR**. Follow the Installation Procedure above after replacing all exterior fiber and neoprene gaskets under wing nuts and or thumbs screws – these exterior gaskets must be replaced after every removal of access door and or every 30 days and prior to reinstallation.

